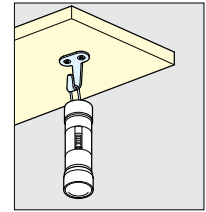
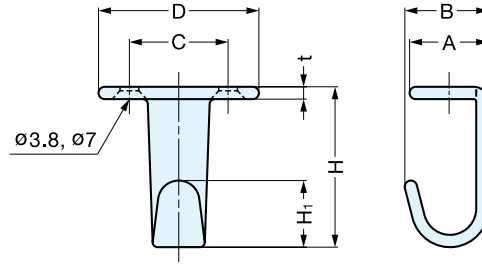


# HOOK



# HJ



Installation

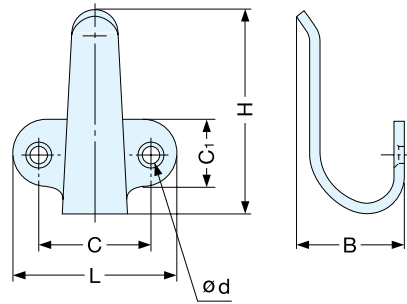
Material	Finish
304 Stainless Steel	Satin

Item No.	D	C	H	H <sub>1</sub>	A	B	t	Load Capacity (kg)	Weight (g)	Box (pcs)	Carton (pcs)	Screw
HJ-20	28	18	27 (1-1/16")	11	13	17 (43/64")	2.5	10 (22 lbs)	11	120	1200	3.1 x 16
HJ-30	32.5	20	32.5 (1-9/32")	13.5	16	17 (43/64")		8 (17.6 lbs)	15	30	600	3.5 x 16
HJ-50	43.5	30	47 (1-27/32")	22	21	22 (7/8")		10 (22 lbs)	30	40	800	

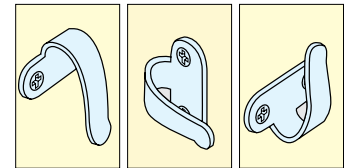
# HOOK



# 2H



• Unique design, also can be used as a pull.



Installation

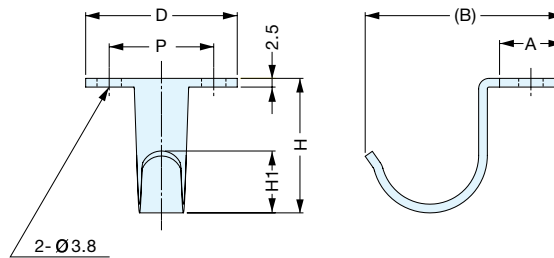
Material	Finish
304 Stainless Steel	Satin

Item No.	L	C	C <sub>1</sub>	H	B	d	Load Capacity (kg)	Weight (g)	Box (pcs)	Carton (pcs)	Screw
2H-20	28 (1-3/32")	18	10	30 (1-3/16")	18	4.62	10 (22 lbs)	13	120	1200	3.1 x 16
2H-30	32.5 (1-09/32")	20	13	39 (1-17/32")				18	100	1000	
2H-40	35 (1-3/8")	21.5	16	44 (1-47/64")	23	4.7	6 (13.2 lbs)	23	80	800	3.5 x 16
2H-50	43 (1-11/16")	30	18	56 (2-13/64")				25	34	50	

# HOOK



# HJU



Material	Finish
304 Stainless Steel	Satin

Item No.	D	P	H	H <sub>1</sub>	A	B	Load Capacity (kg)	Weigh t(g)	Box (pcs)	Carton (pcs)
HJU-30S	32.5 (1-9/32")	20 (25/32")	25 (63/64")	13	13	41.8	8 (17.6 lbs)	15	30	600
HJU-50S	43.5 (1-45/64")	30 (1-11/64")	38.5 (1-33/64")	18	18	59	10 (22 lbs)	30	40	800